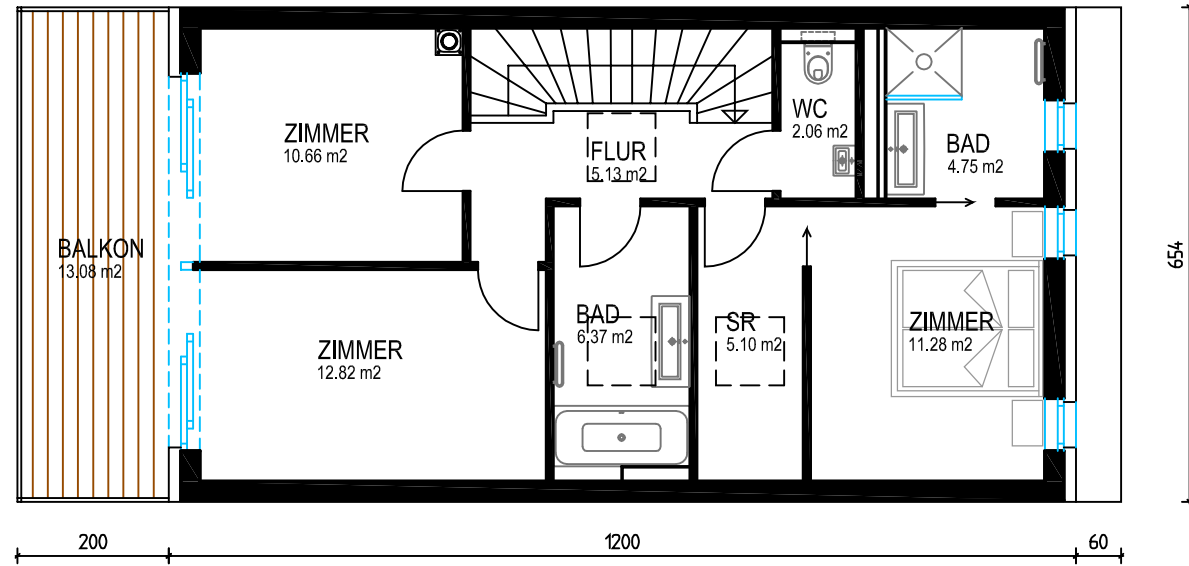
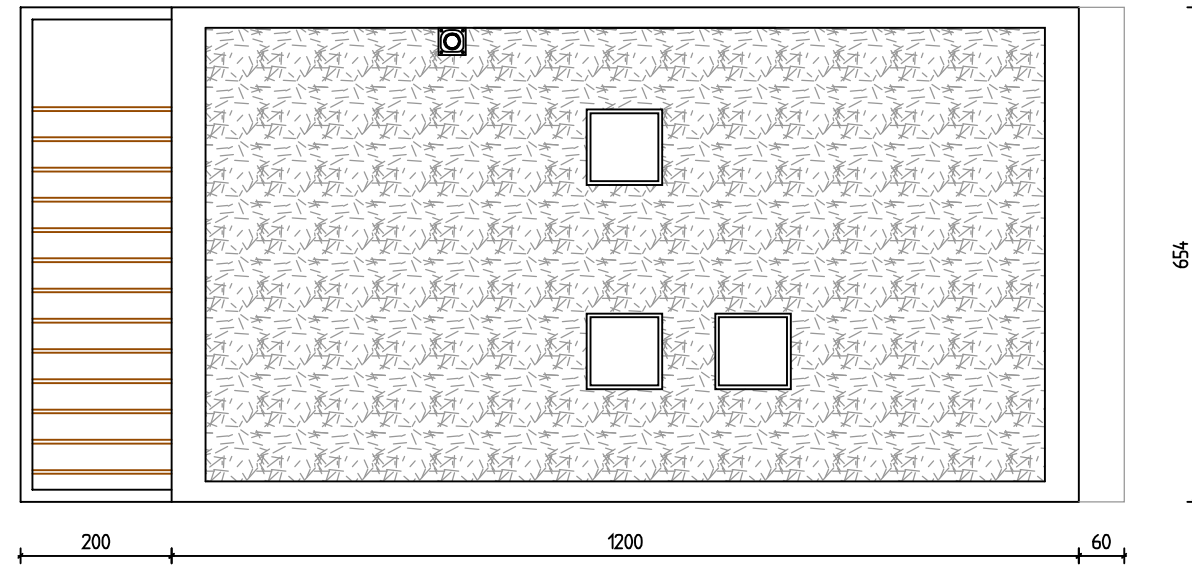


OG 58.17 m²

OBERGESCHOSS

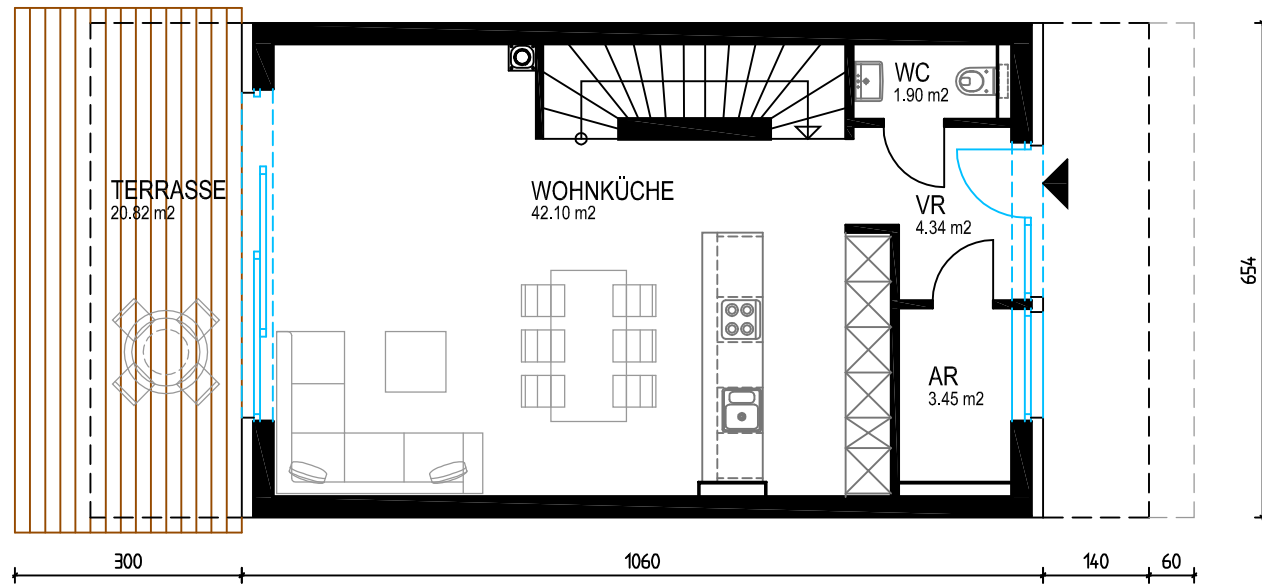


DACHDRAUFSICHT

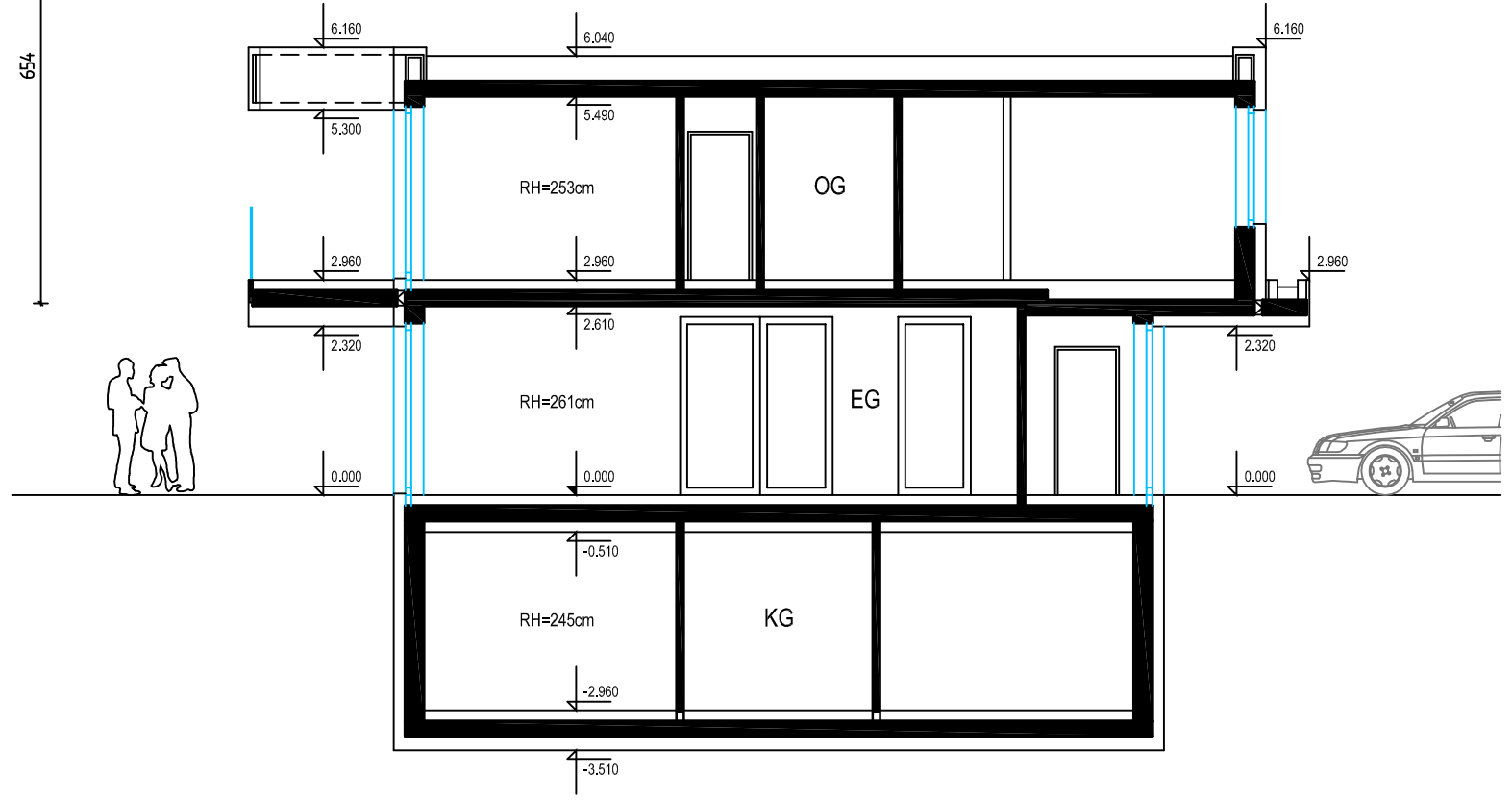


EG 51.80 m² / EG+OG 109.97 m²

ERDGESCHOSS

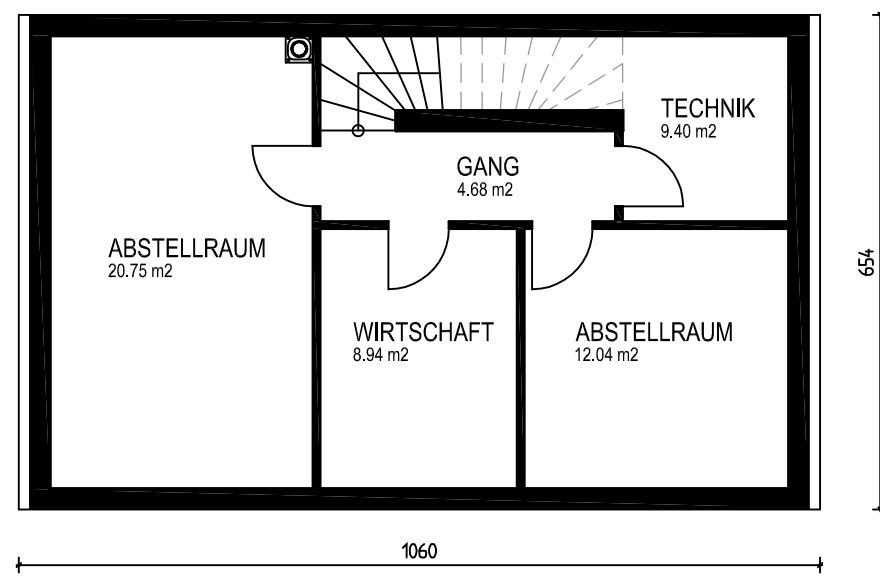


SCHNITT



KG 55.82 m² / KG+EG+OG 165.78 m²

KELLERGESCHOSS



PROJEKT:	2+81 ACHAU, SULZWEG OST
PLANINHALT:	GRUNDRISS HAUS TYP "C"
PROJEKTNR.:	SUL
PLANNUMMER	INDEX
03C	
DATUM	29.06.2022
GEZ.	GW
MST.	1:100
PLANGRÖSSE	A3

ENTWURF

TYP "C"